

# SmartSum



Copyright © 1994 Oakley Data Services  
Call +44 (0)1889 565064, Fax +44 (0)1889 563219, CIS 74774,1347

## Welcome to SmartSum

[Introduction](#)

[The Elements of the SmartSum Screen](#)

[General Information, Hints and Tips](#)

[Menu Items](#)

[Keyboard Interface](#)

[Writing Macros](#)

[If You Haven't Got a Sound Card - Using the PC Speaker Driver](#)

[Replacing the Sounds With Your Own](#)

[Replacing the Standard Windows Calculator with SmartSum](#)

[The Shareware Concept, the ASP, Distribution Requirements and Warranty](#)

[Ordering](#)

[What's New in V1.6](#)

[Upgrade Policy and Getting Support](#)

This software is supplied as is without warranty or representation either express or implied with respect to the program or its documentation including their quality, performance, merchantability, or fitness for a particular purpose.

In no event will Oakley Data Services or any of its agents or assigns, or any organization distributing SmartSum on its behalf be liable for direct, indirect, special, incidental, or consequential damages arising out of the use of, or inability to use the program.

All trademarks are acknowledged.

# What Does SmartSum Do



Copyright © 1994 Oakley Data Services  
Call +44 (0)1889 565064, Fax +44 (0)1889 563219, CIS 74774,1347

## Introduction

SmartSum is a Windows based implementation of an adding machine/printing calculator. It also has a number of tricks that a normal printing calculator cannot do.

- Audible feedback can be selected to ensure accuracy of input. SmartSum can optionally be configured to vocalise the digits as entered, the operators as entered and the results of calculations. The supplied sounds can be replaced by the user to allow for different languages etc.
- Calculations can be saved and re-loaded.
- Incorrect entries can be corrected.
- Entries can be deleted.
- Additional entries can be inserted.
- Decimal accuracy can be changed at any time in a sequence of calculations, and the whole sequence will be re-calculated.
- Subtotals and entry counts can be displayed or hidden at will.
- Notes can be added to individual entries and to the results of calculations
- Tax calculations, such as the addition of VAT(TVA) in Europe or State Sales Tax in the USA are simplified by the inclusion of three "TAX" buttons which can calculate Tax-Inclusive price given a Tax-Exclusive price and Vice-Versa. The tax rates are user-defineable.
- The tally roll can be printed using any available font, or copied to the clipboard.
- Macros (recorded sequences of keystrokes) can be used to simplify repeated calculations. A number of useful macros are supplied, such as conversions from gallons to litres, fahrenheit to celcius etc. You can also record your own macros or export them to and import them from other sources.
- Macros can request user-input at various stages of the calculation.
- Ten memories are available for more complex calculations.
- Calculation results can be injected automatically into another application, such as a spreadsheet.
- Entries can be "checked off".
- Calculations can be titled. The title is saved and reloaded with the calculation, and printed with the calculation.
- The display's colors can be reconfigured as desired.
- An "always on top" mode is available.

Click on the area of interest in the screenshot below

The screenshot shows the SmartSum calculator interface. The main display shows the result **46.10** in red. The interface includes a menu bar (File, Edit, Entries, Macros, Options, Help), a keypad with various functions (New, C, CE, <, Sqrt, MS, Note, etc.), and a list of items in the 'Optional Calculation Title' window.

**Optional Calculation Title**

68.40
+ 5.00
- 2.50
- 14.30
- 10.50
46.10 t

At the bottom of the calculator, there are buttons for currency symbols (\$, \$\$), a unit button (n), and action buttons (Inject, Print). The mode is set to M0.

# General Information



Copyright © 1994 Oakley Data Services  
Call +44 (0)1889 565064, Fax +44 (0)1889 563219, CIS 74774,1347

## Rounding Errors when using 2,4 or 6 Decimal Places

When you set SmartSum to use 2, 4 or 6 decimal places, you can introduce small errors because of the "rounding" that occurs. For example if you set decimal places to say "2", and enter 10 divided by 6, the result will be 1.6666666666 recurring, which SmartSum will round as requested to 1.67.

If you then multiply by 6, you will get a result of 10.02, not the 10 you started with. This is due to the effect of rounding the first calculation to 2 decimal places.

Switching to fully-floating decimal will always give the correct result to the limit of the accuracy of the numeric co-processor your PC has, or the emulation of it Windows undertakes if your PC does not have a co-processor.

## Tax Calculations

Assuming you have set the correct rate using the "Tax Rate" option of the "Entries" menu, you can quickly perform sales-tax type calculations. For example to add tax at 17.5% to an item with a value of 25.00 first enter the value 25.00, then press the "+" button followed by the "Tax a" button, and the resultant tax-inclusive cost of 29.38 will be displayed. The tally-roll will show that the tax component is 4.38, and the "a" sign to the right shows it has been automatically calculated by use of the "Tax a" button.

Similarly if you have an item priced at 41.07 including tax at 17.5% then you can calculate the tax-exclusive cost by first entering 41.07, then pressing the "-" key followed by the "Tax a" key, which will give a result of 34.95, and a tax component of 6.12. Again, the 6.12 will have "a" to the right on the tally roll to indicate it was calculated automatically by use of the "Tax a" button.

## Copying to the Windows Clipboard

"Tally-Rolls" copied to the windows clipboard are padded with spaces to display correctly if a non-proportional font is used. You can see the effect of a non-proportional font on the clipboard by selecting "OEM-TEXT" from the "View" menu of the Clipboard viewer. You may also need to use a non-proportional font (such as Courier) if you paste the information into another document.

## Printing

You can usually print successfully using a proportional font, and the figures will line up OK because in most proportional fonts the sizes of the numeric characters are in fact all the same. However, this isn't always true, and if you do get "wiggly" printing you have little choice but to change font.



Copyright © 1994 Oakley Data Services  
Call +44 (0)1889 565064, Fax +44 (0)1889 563219, CIS 74774,1347

## Menu Commands:-

*Select the Menu of interest:-*

[File Menu](#)

[Edit Menu](#)

[Entries Menu](#)

[Macros Menu](#)

[Options Menu](#)

[Help Menu](#)

# File Menu Commands



Copyright © 1994 Oakley Data Services  
Call +44 (0)1889 565064, Fax +44 (0)1889 563219, CIS 74774,1347

## File Menu

### **New**

The New command clears the Tally Roll and completely resets the calculator. Note that it doesn't warn you if you haven't saved the current calculation.

Keyboard Shortcut - "Alt + W"

### **Open**

The Open command reloads a previously saved calculation.

Keyboard Shortcut - None

### **Save**

The Save command will save the current calculation, using the filename the calculation was last saved as. If SmartSum does not have a current filename then this option will not be available.

Keyboard Shortcut - None

### **Save As**

The Save As command allows you to specify a filename via a standard File Save dialog box. The calculation is then saved to that file. A warning is given if the file already exists.

Keyboard Shortcut - None

### **Print**

The Print command prints the current calculation. The print will have the same style as the displayed "tally roll", with subtotals and entry counts if they have been selected. Each page of the "tally roll" will be headed by the entry in the title box.

Keyboard Shortcut - "Alt + P"

### **Printer Font**

The Printer Font command allows you to select the font you wish to use for printing. Take a look at the General Information topic in this Help File for some hints on selecting fonts.

Keyboard Shortcut - None

### **Printer Setup**

The Printer Setup command allows you to select which printer to use. Unless instructed otherwise by using this command, SmartSum uses the default Windows printer.

Keyboard Shortcut - None

### **Exit**

Closes SmartSum. Note that there is no warning if you haven't saved or printed the tally roll.

Keyboard Shortcut - None

# Edit Menu Commands



Copyright © 1994 Oakley Data Services  
Call +44 (0)1889 565064, Fax +44 (0)1889 563219, CIS 74774,1347

## Edit Menu

### **Copy**

The Copy command places the contents of the "tally roll" onto the Windows Clipboard, from where it can be pasted into other documents such as Word Processors. The data placed on the clipboard will have the same style as the displayed "tally roll".

Keyboard Shortcut - None

### **Copy Result**

Copies just the number currently displayed in the "Main Display" to the Windows Clipboard.

Keyboard Shortcut - "Ctrl + Ins"

### **Paste**

The Paste command copies to the SmartSum display the number on the Windows Clipboard, as if you had entered it yourself via the keyboard. Note that the contents of the Clipboard have to be numeric!

Keyboard Shortcut - "Shift + Ins"

### **Inject**

The Inject command takes the number currently in the SmartSum display and automatically pastes it into the target application at the current insertion point. The default target application is Microsoft Excel, but can be changed. To define the target application see the Options Menu commands.

Keyboard Shortcut - None. For technical reasons a keyboard shortcut cannot be implemented reliably

### **Find**

Locates the first entry on the tally roll that has the value entered in the dialog box that is presented.

Keyboard Shortcut - None

### **Find Next**

Locates the next entry between the currently selected entry and the end of the tally roll that has the value as previously entered in the "Find" dialog box.

Keyboard Shortcut - None



# Entries Menu Commands



Copyright © 1994 Oakley Data Services  
Call +44 (0)1889 565064, Fax +44 (0)1889 563219, CIS 74774,1347

## Entries Menu

### ***Amend Entry***

The Amend Entry command allows you to change the currently selected entry on the "tally roll" (shown with a small > sign). The complete sequence is then recalculated. To select the correct entry for amendment simply click on it with the mouse, or navigate to it with the cursor keys. Double-Clicking on an entry has the same effect.

Keyboard Shortcut - "Ctrl + Enter"

### ***Insert Entry***

The Insert Entry command allows you to insert a new entry on the "tally roll" immediately after the currently selected one. (shown with a small > sign). The complete sequence is then recalculated.

Keyboard Shortcut - "Insert"

### ***Delete Entry***

The Delete Entry command deletes the currently selected entry on the "tally roll" (shown with a small > sign). The complete sequence is then recalculated.

Keyboard Shortcut - "Ctrl + Delete"

### ***Check Entry***

The Check Entry command places a small "c" to the right of the currently selected entry on the "tally roll" (shown with a small > sign), and then advances the selection one step. Using this you can easily "check off" a sequence of entries. If an entry is already checked it will be "unchecked". Using the Ctrl+Space keyboard shortcut is probably the easiest way to check off a sequence of entries.

Keyboard Shortcut - "Ctrl + Space"

### ***Uncheck All***

The Uncheck All command removes the checkmarks from all the entries on the "Tally Roll".

Keyboard Shortcut - "Ctrl + U"

### ***Individual Subtotal***

The Individual Subtotal command causes a subtotal to appear after the currently selected entry on the "tally roll", unless there is already a subtotal there, in which case it is removed. The § button below the tally roll has the same effect.

Keyboard Shortcut - "Ctrl + S"

### ***Clear Individual Subtotals***

This command clears all Individual Subtotals set with the "Individual Subtotal" command.

Keyboard Shortcut - "Ctrl + I"

## **Notes**

Allows you to add, display or edit a note attached to the currently selected entry on the tally roll.

**Keyboard Shortcut - "Ctrl + N"**

## **Set Tax Rate "A", "B", "C"**

This option allows you to set the Tax rates used in calculations when one of the three "Tax" buttons is used.

**Keyboard Shortcut - None**

# Macros Menu Commands



Copyright © 1994 Oakley Data Services  
Call +44 (0)1889 565064, Fax +44 (0)1889 563219, CIS 74774,1347

## Macros Menu

Macros are pre-recorded sequences of keystrokes that are automatically "replayed" to aid repetitive calculations. They can be written by the user, or imported from other sources. A number of useful macros, including a number of conversion calculations, are supplied with SmartSum.

[For more information see the section "Writing Macros"](#)

### **Execute**

This menu item leads to a sub-menu which lists the first 24 macros, and a final entry "More..." which pops up a dialog box listing all 255 possible macros. Selecting one of the macros, either from its menu entry or from the "More..." dialog box, will cause the macro to execute.

**Keyboard shortcut:- Macros 1 to 12 can be executed by pressing keys F1 to F12, and macros 13 to 24 will execute if keys F1 to F12 are pressed with the Shift key depressed.**

### **Define**

From this sub-menu you can select the macro you wish to define or modify.

**Keyboard Shortcut :- None**

### **Import**

From this sub-menu you can select the macro you wish to import. A standard "File-Open" box is presented to allow you to select a previously exported SmartSum macro. Note that the file, normally with a "SSE" extension, is in a format unique to SmartSum, and cannot be effectively edited with other tools. If you want to copy/paste a macro sequence you can do so with the Ctrl+Ins and Shift+Ins key combinations from within "Define Macro" dialog box.

**Keyboard Shortcut :- None**

### **Export**

From this sub-menu you can select the macro you wish to Export. A standard "File-Open" box is presented to allow you to select a name and location for the export file.

**Keyboard Shortcut :- None**

# Writing Macros



Copyright © 1994 Oakley Data Services  
Call +44 (0)1889 565064, Fax +44 (0)1889 563219, CIS 74774,1347

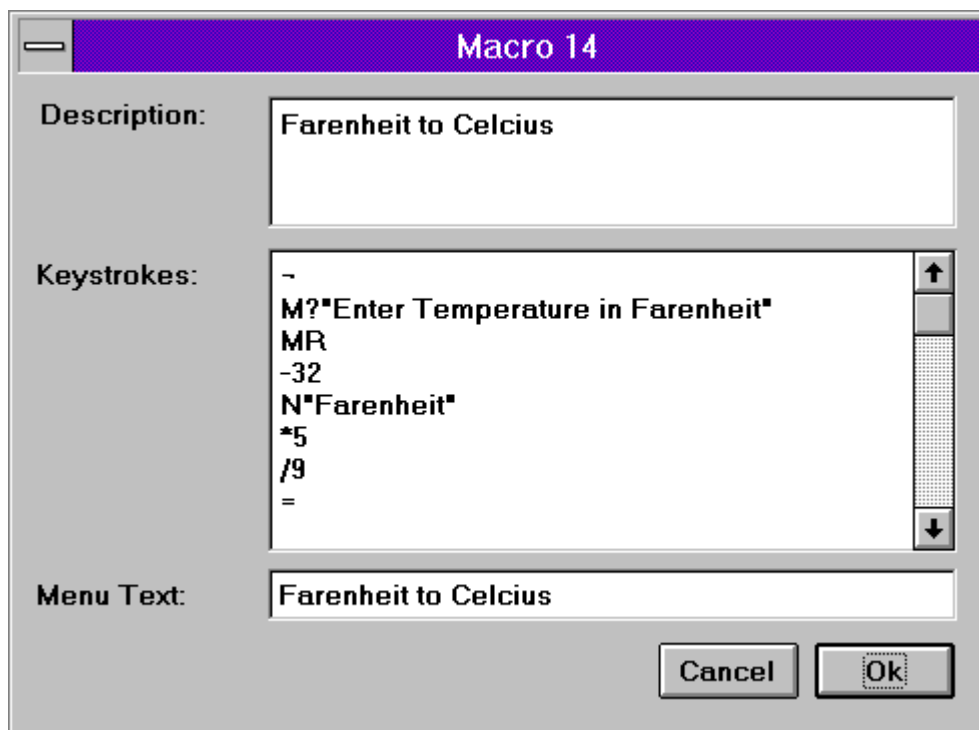
## **Basic Macro Concepts**

A SmartSum macro is almost nothing more than a recorded sequence of keystrokes, but with thoughtful use can be an astonishing timesaver, and can also guarantee consistency across multiple users. Macros can be imported and exported, allowing authoring in one location and subsequent distribution across a wide user population.

A number of useful macros are provided with SmartSum, and a study of these will help you understand how macros work.

## **Defining the Macro**

Selecting the "Define Macro" submenu from the "Macros" menu, and selecting a macro to define, leads to a dialog box that has three edit controls, in addition to the usual "OK" and "Cancel" buttons.



The first Edit Control, "Description", simply allows you to enter a description which will be useful to you or anyone you send the macro to in the future. It is not used by the macro processor in any way.

The second Edit Control, "Keystrokes", is where you type the actual sequence of simulated keystrokes that form the macro.

The third Edit Control, "Menu Text", allows you to define the text that will appear in the Menu to identify this macro, and to appear in the list box where macros 25-255 (which do not appear directly

on the menu) are selectable.

### **Syntax Rules**

The SmartSum macro syntax processor (the component that "reads" the macros you write) is simple, and operates on two basic principles:-

- Anything that it doesn't understand is completely ignored. (Like spaces, line-ends and so on, allowing complete freedom of formatting).
- With the exception of the mechanisms for inputting notes and asking for user input, a macro operates exactly as it would if you had entered the same set of keystrokes directly into SmartSum using the keyboard.

### **Keyboard/Macro equivalents:-**

Note - Apart from the text representing a note, the macro processor is not case sensitive.

### **Simple calculator operations**

- The digit keys (0 to 9) are represented by the single characters "0" to "9"
- The decimal point is represented by the single character "."
- Plus, minus, times, divide and percent are represented by the single characters "+", "-", "\*", "/" and "%" respectively
- Square Root is represented by the single character "s"
- Enter, or the equals button, is represented by the single character "="

### **Tax Operations**

- The "Tax a", "Tax b" and "Tax c" buttons are represented by the single characters "a", "b" and "c" respectively

### **Tally Roll Management**

- "New" is represented by the single character "~"
- "Clear" is represented by the single character "!"

### **Simple Memory Operations (which act on the currently active memory).**

- "Memory Plus" is represented by the character pair "M+"
- "Memory Minus" is represented by the character pair "M-"
- "Memory Clear" is represented by the character pair "MC"
- "Memory Recall" is represented by the character pair "MR"

### **Advanced Memory operations**

- Changing the active memory is achieved by the character pairs "M0" to "M9" respectively.

### **Soliciting Input from the User**

- The user can be asked to enter a value any number of times during a sequence of calculations using the syntax:-

M?"Text to appear as prompt in dialog box"

Whatever value the user enters will be stored in the currently active memory, from where it can be recalled at any time using the "MR" command.

Take care to ensure that you don't forget the trailing quote, which is an easy mistake to make.

### **Adding notes to the tally roll.**

- Notes can be added to the tally roll at any stage of the calculation, using the following syntax:-

N"Note by some input"

To add a note to the currently selected input value on the tally roll, or

R>Note by the result"

To add a note by the subtotal/total at this point.

Again take care to ensure that you don't forget the trailing quote!

### ***Notes on when the tally roll selection changes***

To use the notes option effectively it is vital to understand when the "currently selected item" on the tally roll changes. As stated before, it operates exactly as it does from the keyboard, and this can be a trap for the unwary.

For example, to enter the value 1234.56 and put a note saying "Income" beside it, and then deduct a value of 100 and put a note of "Income Tax" beside it, the following sequence WILL NOT WORK, although it looks as though it might:-

```
1234.56
N"Income"
-100
N"Income Tax"
=
```

The reason that it fails is because at the time the N"Income" command is issued, the value 1234.56 has not been transferred to the tally roll. That will only occur when a subsequent operator (like the - sign) causes the tally roll to be updated. As stated before, this is exactly the same as SmartSum operates without macros. A sequence that would achieve the desired result is:-

```
1234.56 -
N"Income"
100 =
N"Income Tax"
```

# Options Menu Commands



Copyright © 1994 Oakley Data Services  
Call +44 (0)1889 565064, Fax +44 (0)1889 563219, CIS 74774,1347

## Options Menu

### *Display Mode*

Allows you to select from the five available decimal accuracy modes, 2,4 or 6 decimal places, fully floating, or "currency" mode. In currency mode the decimal point is automatically inserted so as to leave two digits to the right of it. So for example to enter the value 123.45 you merely need to enter the 1,2,3,4 and 5 keys in succession, the decimal point is not required.

Keyboard Shortcuts - "Ctrl + A", "Ctrl + F", "Ctrl + F2", "Ctrl + F4", "Ctrl + F6" as appropriate.

### *Paper Mode - All Subtotals*

This command is a toggle which switches between the display of all intermediate results, and only the final result. The §§ button below the tally roll has the same effect. Note that individually assigned subtotals always display, irrespective of the state of this setting.

Keyboard Shortcut - "Ctrl + L"

### *Paper Mode - Display Entry Count*

This command is a toggle which displays or hides the count of entries in a calculation. The (n) button below the tally roll has the same effect.

Keyboard Shortcut - "Ctrl + E"

### *Sound Mode*

Allows you to switch on or off the vocalisation of the digits and operators as you enter them, and the results as calculated. There is also a "global" on/off switch to control whether any part of macro processing is vocalised. If the "Say Macros" option is off, no part of any macro will be spoken. If "Say Macros" is on, the various elements of macros will be vocalised according to the "say digits", "say operators" and "say results" settings.

Keyboard Shortcut - None

### *Tax Button Names*

Enables you to define the legends you want to appear on each of the three "Tax" buttons. The hot key is defined as the key immediately following the character & in whatever you enter. For example giving a button a name of &VAT would cause Alt+V to become the shortcut. Note that you need to be careful not to duplicate any already existing shortcuts, or the results will be unpredictable.

You can also completely hide a button if you want to by giving it no name whatsoever.

Keyboard Shortcut - None

### *Colors*

This option allows you to configure the colors used by various parts of the SmartSum display. Depending on your video configuration you may only get an approximation of the color you select.

Keyboard Shortcut - None

### ***Define Inject Target***

You use this option to define the application that will receive an automatically pasted copy of the total or subtotal at the currently selected item on the tally roll. When you select this option the mouse-pointer will change to a needle/syringe. You should then move the mouse pointer over the application you wish to receive injections and press the left mouse button. Note that anywhere over the target application is OK, you don't need to accurately pinpoint the position in the target application.

Keyboard Shortcut - None

### ***Auto Subtotal***

This option is a toggle which controls the effect of the "=" button (or its keyboard equivalent, the Enter key). If the option is set (i.e. there is a check next to the menu item), then pressing the "=" button causes a subtotal to be inserted at this point in the calculation. If the option is not set then no subtotal is automatically added, although one can be manually added by using the § button. Automatic subtotals can be removed in the same way as those added manually.

Keyboard Shortcut - None

### ***Always On Top***

This option is again a toggle, and when set causes SmartSum to remain above all other active windows even if it is not itself active, much like the similar option in Windows Help.

Keyboard Shortcut - None



# Help Menu Commands



Copyright © 1994 Oakley Data Services  
Call +44 (0)1889 565064, Fax +44 (0)1889 563219, CIS 74774,1347

## Help Menu

### ***Index***

Jumps to the Contents Topic of this Help File.

[Keyboard Shortcut - None](#)

### ***Keyboard***

Jumps to the Keyboard Shortcut Topic of this Help File.

[Keyboard Shortcut - None](#)

### ***Using Help***

Jumps to Help on using Windows Help itself.

[Keyboard Shortcut - None](#)

### ***About***

Displays the About Dialog.

[Keyboard Shortcut - None](#)

### ***Order Form***

Jumps to an order form to register a copy of SmartSum.

[Keyboard Shortcut - None](#)

# Keyboard Usage



Copyright © 1994 Oakley Data Services  
Call +44 (0)1889 565064, Fax +44 (0)1889 563219, CIS 74774,1347

## General

The program is designed such that the numeric portion of the keyboard works as much like a normal adding machine/calculator as possible. The numbers 0 to 9 and the decimal point operate as expected, and the +, -, \*, / and % keys are for addition, subtraction, multiplication and division. For effective use the numeric lock must be set, and this will normally be shown by a light on the keyboard. The enter key has the effect of the = key on a normal calculator. The normal numeric keys accessed by the use of Shift and the top row of keys also function, as do the +, -, \* and / keys on the main keyboard.

The "Clear" key is simulated by the PC's "Esc" key, and the PC's "Backspace" key provides a way to remove the last entered digit. The Ctrl and Minus key combination simulates the sign-change button.

For a complete list of shortcut keys for all the buttons on the calculator keyboard, refer to the section:-

[The Elements of the SmartSum Screen](#)

## Menu Shortcuts

As well as the normal numeric keys required to operate an adding machine, there are shortcut keys for most of the menu commands as well. These are described under the description of each menu item in the following sections:-

[File Menu](#)

[Edit Menu](#)

[Entries Menu](#)

[Macros Menu](#)

[Options Menu](#)

[Help Menu](#)

# If you haven't got a sound card



Copyright © 1994 Oakley Data Services  
Call +44 (0)1889 565064, Fax +44 (0)1889 563219, CIS 74774,1347

- (Note you can install the Win3.1 speaker driver on Win95 if you want to - it still works - just right click on the OEMSETUP.INF file).

## ***Using the Speaker Driver***

If you haven't got a sound card, don't worry, you don't need to miss out on the audible feedback that makes SmartSum such a powerful tool.

It is possible to make SmartSum "speak" through your normal PC Speaker, using the PC-Speaker driver which we have included with Smartsum and which will have been installed in your SmartSum Directory.

To make use of the Speaker Driver, you first need to "install" it, and the steps required are as follows:-

- 1 Start the Windows Control Panel, usually found in the "Main" group in Program Manager.
- 2 Double-Click on the "drivers" Icon to start the driver installation utility.
- 3 Click on the "Add" button.
- 4 Select "Unlisted or Updated Driver" from the list (it is usually at the top), and click on "OK".
- 5 When asked to insert the disk with the new driver on, type in the directory in which you installed SmartSum (usually C:\SMARTSUM) and click on OK. Alternatively you can click on the "Browse" button and navigate to the correct directory.
- 6 Follow the instructions for configuring the driver, using the "Test" option usually provides good quality sound.

## ***Some notes about the Speaker Driver***

There is an option in the Speaker Driver configuration to run it with "interrupts disabled" which effectively means while it is vocalising a digit or phrase your PC will not respond to the keyboard or to mouse movements. Even if you elect to run with "interrupts enabled" some PC's seem to occasionally ignore the keyboard so you may need to experiment to see what works best for you. Of course if SmartSum has not accepted a digit you have pressed you will be alerted because you won't hear it!

If you decide to replace the sounds provided with some of your own it is advisable to keep them fairly short and crisp.

# Replacing the supplied sounds



Copyright © 1994 Oakley Data Services

Call +44 (0)1889 565064, Fax +44 (0)1889 563219, CIS 74774,1347

It is very easy to replace the sounds supplied with ones of your own choice, perhaps to support your own language. Simply replace the SS1.WAV to SS21.WAV files in the SmartSum directory with your own. The correlation between the sound file and what it relates to appears below:-

- SS0.WAV to SS9.WAV are the digits "0" to "9"
- SS10.WAV is the phrase "point" ( . )
- SS11.WAV is the phrase "plus" ( + )
- SS12.WAV is the phrase "minus" ( - )
- SS13.WAV is the phrase "times" ( \* )
- SS14.WAV is the phrase "Divided by" ( / )
- SS15.WAV is the phrase "Equals" ( = )
- SS16.WAV is the phrase "Per Cent" ( % )
- SS17.WAV is the phrase "Change Sign" ( +- )
- SS18.WAV is the phrase "Tax A"
- SS19.WAV is the phrase "Tax B"
- SS20.WAV is the phrase "Tax C"
- SS21.WAV is the phrase "Square Root" ( Sqrt )

# Replacing the Standard Windows Calculator



Copyright © 1994 Oakley Data Services  
Call +44 (0)1889 565064, Fax +44 (0)1889 563219, CIS 74774,1347

If you wish, you can replace the standard Windows Calculator with SmartSum, but leave the standard Windows Calculator available for those times when you wish to use some of the functions that it has that SmartSum does not (SIN, COS, TAN etc). You can then call the standard Windows Calculator by pressing the "MS" button on the SmartSum keyboard. You can also "cut & paste" quite effectively between them.

## ***But why would I want to?***

Because there are some third party applications that have automatic links to the Windows Calculator, when you might now prefer that they jumped to SmartSum instead. But it would still be nice to be able to use the original Windows Calculator if the need arises.

## ***So what do I need to do?***

Follow these steps:-

- 1 *Using File-Manager rename the original CALC.EXE file (probably in your Windows directory) to MS\_CALC.EXE.*
- 2 *Copy the REP\_CALC.EXE file from the SmartSum directory to the location of the original Windows calculator.*
- 3 *Rename the newly copied REP\_CALC.EXE to CALC.EXE*
- 4 *Copy the file REP\_CALC.INI to the same directory as the new CALC.EXE*
- 5 *Modify the last line of the REP\_CALC.INI file (the "Directory=" line) so it points to the location of SmartSum. (Retain any trailing backslash).*

(These steps may seem more complicated than absolutely necessary, but it does allow total flexibility for example where networks are involved).

## ***And how do I put it back the way it was?***

To reinstate the original calculator simply reverse the process (i.e. delete the new CALC.EXE and rename MS\_CALC.EXE to CALC.EXE).

# The shareware concept, the ASP, and the ASP Ombudsman



Copyright © 1994 Oakley Data Services  
Call +44 (0)1889 565064, Fax +44 (0)1889 563219, CIS 74774,1347

This program is produced by a Member of the Association of Shareware Professionals.

## ***What is Shareware?***

Shareware distribution gives users a chance to try software before buying it. If you try a Shareware program and continue using it, you are expected to register. Individual programs differ on details -- some request registration while others require it, some specify a maximum trial period. With registration, you get anything from the simple right to continue using the software to an updated program with printed manual.

Copyright laws apply to both Shareware and commercial software, and the copyright holder retains all rights, with a few specific exceptions as stated below. Shareware authors are accomplished programmers, just like commercial authors, and the programs are of comparable quality. (In both cases, there are good programs and bad ones!) The main difference is in the method of distribution. The author specifically grants the right to copy and distribute the software, either to all and sundry or to a specific group. For example, some authors require written permission before a commercial disk vendor may copy their Shareware.

Shareware is a distribution method, not a type of software. You should find software that suits your needs and pocketbook, whether it's commercial or Shareware. The Shareware system makes fitting your needs easier, because you can try before you buy. And because the overhead is low, prices are low also. Shareware has the ultimate money-back guarantee -- if you don't use the product, you don't pay for it.

## ***Distribution requirements***

You have the right, and in fact you are actively encouraged, to distribute copies of the Shareware version of this product. You may assume you have our authority to distribute this product unless we explicitly tell you otherwise. It must, however remain in its original, unmodified state, and all its constituent files must be included. No-one may charge for the program itself, although a reasonable fee for the media used and copying costs is allowable.

***You may not distribute copies of the registered version of this product. You may not distribute the SMTSUM1X.DLL file in any form.***

## ***Warranty***

This software is supplied as is without warranty or representation either express or implied with respect to the program or its documentation including their quality, performance, merchantability, or fitness for a particular purpose.

In no event will Oakley Data Services or any of its agents, or assigns, or any organisation distributing SmartSum on its behalf be liable for direct, indirect, special, incidental, or consequential damages arising out of the use of, or inability to use the program.

All trademarks are acknowledged.

### ***The ASP Ombudsman***

This program is produced by a member of the Association of Shareware Professionals (ASP). ASP wants to make sure that the shareware principle works for you. If you are unable to resolve a shareware-related problem with an ASP member by contacting the member directly, ASP may be able to help. The ASP Ombudsman can help you resolve a dispute or problem with an ASP member, but does not provide technical support for members' products. Please write to the ASP Ombudsman at 545 Grover Road, Muskegon, MI 49442-9427 USA, FAX 616-788-2765 or send a CompuServe message via CompuServe Mail to ASP Ombudsman 70007,3536.

# Registering



Select the "Order Form" button on the reminder screen, or from the "Help" menu, for phone numbers and addresses.

You can register your copy of SmartSum by Phone, Fax, Mail or E-Mail. We accept cheques in Sterling, or VISA or Mastercard. If you have a CompuServe account you can also register via the SWREG service. SmartSum's SWREG product ID is 2705 and the price via this mechanism is currently 35 US dollars.

## Printing an Order Form

You can access an order form if you wish to register by Fax, Mail or E-Mail by pressing the 'Order Form' button on the reminder screen, or from the "Help" drop down menu. The order form shows the current registration fees and addresses and phone numbers.

## Multiple Copy Licences

Registration of a single copy of SmartSum allows you to use it on a single PC, and to make back-up copies for security purposes. It does not permit installation on more than 1 PC at the same time, or use on multiple workstations connected to a network.

**However, we do offer extremely attractive discounts for multiple-copy licences, allowing you to make SmartSum an integral part of your network, site or corporation. Please contact us for details.**

## Please let us know which version you currently have

If you register by phone, please let us know which version of the program you currently have (shown as R1.5 or similar on the program caption). This helps us greatly to determine how effective our shareware distribution methods are. If you use the order form the version number is already pre-printed on it.



# Whats New in V1.6



Copyright © 1994 Oakley Data Services

Call +44 (0)1889 565064, Fax +44 (0)1889 563219, CIS 74774,1347

- New female voice (although the original sounds from V1.5 can be retained if you prefer them - just copy the original WAV files across).
- Workaround for rounding problem that occurs on Win95 - if you type in a series of say the digit 5 whilst in "A" mode sometimes a 4 will appear!

# Upgrade Policy and Getting Support



Copyright © 1994 Oakley Data Services  
Call +44 (0)1889 565064, Fax +44 (0)1889 563219, CIS 74774,1347

## **Upgrade Policy**

The code (.EXE file) for the registered and unregistered versions of the program are identical, and it is the presence of a file SMTSUM1X.DLL that is supplied with the registered version that causes the program to behave in a registered fashion. The presence of the DLL will also cause any further versions of SmartSum that still bear the 1.x release number to behave as registered versions, wherever you obtain them from. Versions that bear the 1.x release number will generally be for minor enhancements and bug-fixes. Any release containing major new functionality will bear the release number 2.x, and an upgrade fee will probably be chargeable.

We will make new versions of SmartSum available via the usual sources, online on services such as CompuServe, CIX and the Internet and via disk vendors, cover disks and CD's.

The prime locations for new releases are our support section on CompuServe, section 4 of the UKSHARE forum and our Internet site at [www.smartcode.com](http://www.smartcode.com).

If you do acquire a newer version of SmartSum simply ensure that the SMTSUM1X.DLL file you got when you registered is either in the directory that the SmartSum program is in, or is in your WINDOWS directory.

## **Getting Support**

For support, please contact the agent who sold you the software. Full addresses can be found by selecting the "order form" option of the Help menu,

Or contact us via our support section on CompuServe, Section 4 of the UKSHARE forum, or the oakley conference on CIX.

This program is authored by:-

Oakley Data Services,  
Lion Buildings,  
Market Place,  
Uttoxeter,  
Staffordshire ST14 8HZ,  
United Kingdom.

Call +44 (0)1889 565064  
Fax +44 (0)1889 563219  
CIS 74774,1347  
Internet [74774.1347@compuserve.com](mailto:74774.1347@compuserve.com)

### ***Main Readout***

The main display shows digits as entered and provides a readout of results. You can alter to suit your taste from the color from the Options menu.

### ***The "M+" key***

The M+ key adds the value currently displayed in the main display to the currently selected memory.

Keyboard Shortcut - "Alt +"

### ***The "M-" key***

The M- key subtracts the value currently displayed in the main display from the currently selected memory.

Keyboard Shortcut - "Alt -"

### ***The "M rcl" key***

The "M rcl" recalls the value from the currently selected memory to the main display.

Keyboard Shortcut - "Alt R"

## The "M Clr" key

The "M Clr" key resets the currently selected memory to 0.

Keyboard Shortcut - "Alt L"

## The "MS" key

The "MS" key switches control to the original calculator applet supplied with Windows. SmartSum automatically minimizes itself once the original calculator has started.

This can be useful when the original Windows Calculator provides some of the more esoteric functions that SmartSum does not. You can also make effective use of Copy/Paste between the two calculators.

You can permanently replace the standard Windows Calculator with SmartSum, but still have the original calculator available from this button. See the section

[Replacing the Standard Windows Calculator](#)

for more information.

Keyboard Shortcut - None



## Note Button

This button allows you to add a note to the currently selected item in the "tally roll". A dialog box is presented which allows you to place the note by either the input value or by the calculated total or subtotal.

Keyboard Shortcut - "Alt - t"

### ***Tax Buttons***

The three tax buttons provide a convenient way to perform sales tax/VAT/TVA type calculations. The names of the Tax buttons can be modified from the "Options" menu, and the relevant Tax percentages can be set from the "Entries" menu. Setting the name of a Tax button to nothing will remove the button from the display.

The buttons are only functional after use of the + or - operators, and either calculate and add the relevant Tax amount to the current total, or calculate and subtract the relevant Tax amount from the current total.

### ***For example, given a Tax Rate setting on Tax button "a" of 17.5%, the calculation:-***

- 25.00 + TAX "a" = will give a result of 29.37
- 29.37 - TAX "a" = will give a result of 25.00

<p><b>Keyboard Shortcut - Depends on the names given to the buttons by the user. The letter following any &amp; character becomes the "Alt" key shortcut, but take care to avoid already used characters.</b></p>
---

## **The memory display**

The Memory display shows the contents of the currently selected memory.

### ***"Individual Subtotal" Key***

This key is a toggle (i.e. if on it switches off, if off it switches on) which adds or removes the subtotal at the currently selected position on the "tally roll"

**Keyboard Shortcut - "Ctrl S"**

### ***"All Subtotals" key***

This key is a toggle (if on switches off, if off switches on) which adds or removes subtotals at each step in the calculations on the "tally roll". Note that if you switch off all subtotals using this key, some may remain because they were added using the "individual subtotal" key.

Keyboard Shortcut - "Ctrl L"

## Decimal Mode Selector

This control allows you to select the number of decimal places that calculations are rounded to, and whether or not to use "Currency" mode. Possible choices are 2,4 or 6 decimal places, fully-floating (no rounding), or currency mode.

In "Currency" mode there is no need to use the decimal point during input. All numbers are assumed to have two decimal places. For example, using the key sequence 2500 would cause the display to read 25.00. The easiest way to understand this option is to try it!

Note also that if you change mode then any previous sequence on the "tally roll" is recalculated using the new mode!

Keyboard Shortcut - "Ctrl A", "Ctrl F", "Ctrl F2", "Ctrl F4", "Ctrl F6" as appropriate.

### ***"Entry Count" Key***

This key is a toggle which switches on or off the display of the count of entries to the left of the "tally roll"

**Keyboard Shortcut - "Ctrl E"**

### ***The "Inject" Key***

Pressing this button causes the total at the currently-selected point in the "tally roll" to be "injected" into another application, at the point where the cursor is in that other application. The other application could be a spreadsheet, or a word processor.

To define the target for the inject command use the "options" menu.

Keyboard Shortcut - None. Unfortunately there are technical reasons why a keyboard shortcut cannot be made to work reliably.



### ***The "Print" key***

This key prints the tally roll on the currently selected printer (either the Windows default printer, or one selected by use of the "Print Setup" option from the "File" menu. The font used can be selected from the "Printer Font" option on the "File" menu.

Keyboard Shortcut - "Alt P or Ctrl P"

***The "Calculation Title" box***

You can enter text in this box as a "title". It will appear on print-outs and will be saved and re-loaded with the calculation.

## ***The "Tally Roll"***

This displays the sequence of calculations, to the decimal precision requested using the precision selectors located beneath the main readout. You can scroll back to see previous entries by using the "scroll bar" to the right of the "tally roll".

The currently selected transaction is indicated by a small blue ">" sign, and any entries or results that have notes attached to them are indicated by a small green "pin". Subtotals are shown with a small "s" to the right, totals with a small "t". Values automatically calculated by using one of the three "tax" buttons are shown with a small "a", "b" or "c" to the right of the digits. A count of entries in the current sequence can optionally be shown in brackets to the left of the entered digits.

The first line of any notes attached to entries can be quickly displayed by holding down the right hand mouse button while the mouse pointer is over the "tally roll".

The colors of entries/results etc. can be changed by use of the "Options" menu.

The currently selected entry can be modified or additional entries can be inserted by using the "Entries" menu. Modifications or additions cause the complete sequence on the "Tally Roll" to be recalculated.

The "tally roll" can be saved and re-loaded and calculations continued, and the tally roll can be printed, or copied to the Windows Clipboard.

## Memory Selector

The memory selector allows you to select which of the ten available memories to make the "active" memory. The memory display changes to reflect the content of the newly selected memory.

[Keyboard Shortcuts - "Alt 0 to Alt 9"](#)

## **"New" button**

This button completely resets the calculator and clears the "tally roll". Note that no warning is given, so you should save any work you wish to retain before using this button.

**Keyboard Shortcut - "Alt W"**

### ***Minimize Button***

You can use this button to "Minimize" SmartSum to an Icon. All calculations and entries are preserved, ready for re-use when you "restore" Smartsum by double-clicking on its Icon.

## The "=" key

Pressing the "=" key causes the calculation to be undertaken, and if selected via the Options menu a subtotal will automatically be inserted onto the "Tally Roll".

Keyboard Shortcut - "The Enter Key, or the = key"

### ***The "SQRT" key***

This key calculates the square root of the current number shown in the main readout. Note that you cannot have a square root of a negative number.

Keyboard Shortcut - "Alt Q"



### ***Control Menu***

This standard Windows feature allows you to minimize, move or close SmartSum, or switch quickly to the Task Manager and from there to another application.

### ***Smartsum Caption***

This standard Windows feature provides the name of the program (SmartSum) and the name of any currently loaded calculation file (\*.SSC).

You can use the caption bar to move SmartSum around your screen. Position the mouse pointer over the caption bar, depress the left mouse button, and then drag SmartSum to the desired location.

## The "C" key

Clears the current calculation, advancing the "tally roll" by a single line.

Keyboard Shortcut - "Esc"

## The "CE" key

Clears the current entry on the main display to "0". Note that this only clears a number you have keyed yourself. You cannot clear the result of a calculation using this key.

[Keyboard Shortcut - "Del"](#)

## The "<" key

This is the "backspace" key, and removes the last digit keyed by the user.

Keyboard Shortcut - "<" (the backspace key to the right of the # key)

## The digit keys

These keys enter the digits as shown.

Keyboard Shortcut - the digit keys, either on the numeric keypad (with Num Lock set), or along the top row of the keyboard.

## Operator Keys

These keys perform the addition, subtraction, multiplication, division and percentage operations.

Note that the percentage key performs a different operation depending on the previous operator.

For example , the sequence "200 + 20 % =" causes the % key to calculate 20% of 200 and then add it to 200 (i.e. mark-up by 20%). The sequence 200 \* 20% = causes the calculation of 20% of 200, i.e. 40.

[Keyboard Shortcuts - The + - / \\* and % keys](#)

### **The "+-" (sign-switch) key**

The sign-switch key causes the previously entered number to have its sign switched from positive to negative or vice-versa. This enables you for example to multiply by -5 by using the keystrokes \* 5 (sign-Switch) =.

Note that you can only use this key to change the sign of numbers you have entered yourself, and not the results of calculations which would then be inconsistent with the results on the tally roll. If you need to change the sign of a calculated result then multiply by -1.

[Keyboard Shortcut - "Ctrl -"](#)



# Bon d'enregistrement



SmartSum - Version française

Imprimez ce bon de commande et renvoyez le accompagné de votre paiement à :

WindowShare SARL	Téléphone : (+33) 87.30.85.57
B.P. 2078	Fax : (+33) 87.32.37.75
F-57051 METZ cedex 2	Minitel : 3615 WinShare
France	CompuServe : Go WSHARE

Support Technique de ce produit aux numéros ci-dessus, ou, à défaut, en anglais, sur CompuServe auprès de l'éditeur en Grande-Bretagne.

## **Mes coordonnées**

Nom \_\_\_\_\_

Société \_\_\_\_\_

Adresse \_\_\_\_\_

Code Postal \_\_\_\_\_ Ville \_\_\_\_\_

Téléphone \_\_\_\_\_

Fax \_\_\_\_\_

## **Je commande un exemplaire de SmartSum\***

Editez ce texte au besoin pour le nombre d'exemplaires de SmartSum désirés. Pour des marchés de dix licences et plus, contactez WindowShare.

TOTAL Hors Taxe : FF 172,85

( ) TVA 18,6 % \_\_\_\_\_ FF 205,00

( ) Port et emballage \_\_France\_\_ FF 25,00

( ) Port et emballage \_\_Etranger\_ FF 35,00

TOTAL: FF \_\_\_\_\_

Paie ment par :

( ) Chèque bancaire ou postal

( ) VISA

( ) MASTERCARD

Numéro : \_\_\_\_\_ / \_\_\_\_\_ / \_\_\_\_\_ / \_\_\_\_\_ Exp. : \_\_\_\_ / \_\_\_\_

Date: \_\_\_\_ / \_\_\_\_ / \_\_\_\_ Signature (obligatoire) : \_\_\_\_\_

# Order Form - SmartSum R1.6



Copyright © 1994 Oakley Data Services  
Call +44 (0)1889 565064,  
Fax +44 (0)1889 563219,  
CIS 74774,1347

You can print this order form by using the "Print Topic" option from the "File" menu.

You will receive:-

- A copy of the latest registered version of SmartSum, without the reminder screens. Whilst we always try to ship as quickly as we can, by Air Mail if outside the UK, please allow 21 days for delivery.
- A comprehensive Shareware CD containing the latest evaluation versions of all our products together with a myriad of high quality products from other major UK shareware publishers. There are business, graphics, home and games packages galore - something for everyone! The CD has a friendly easy to use menu system and provides screenshots, descriptions, system requirements and publisher information. A lot of the products will also run direct from the CD.

We can accept your order by mail, E-mail, Fax or Phone. You can also register single copies via the Compuserve SWREG service (GO SWREG), using Product ID 2705. The cost via SWREG is \$35.00 (Thirty Five US Dollars). Unless otherwise requested we ship a 3.5" disk.

**We also offer considerable discounts for multi-copy licences for use across networks, across sites or across corporations. Please contact us for details on +44 (0)1889 565064.**

## **Send your order to:-**

Oakley Data Services,  
Lion Buildings,  
Market Place,  
Uttoxeter,  
Staffordshire ST14 8HZ,  
United Kingdom.

Please send me \_\_\_ registered copy(s) of SmartSum.

## **Price :- £23.50 Pounds Sterling.**

(In the EEC this is made up of 20.00 Pounds, plus VAT @17.5%, no charge for shipping. In the rest of the world this is made up of 20.00 Pounds, plus 3.50 Pounds Air-Mail Shipping + Handling).

(As of September 1994 the exchange rate was approximately 1.5 U.S. Dollars to 1.0 Pound Sterling. When we charge your credit card the card company will convert the cost to your local currency at the rate then prevailing and the sum will appear on your bill in your local currency.)

**Total Price : .....**

I enclose a cheque / wish to pay by MasterCard / Visa / Amex (delete as applicable)

**(Note: We can only accept cheques payable in the UK drawn in Sterling.)**

***Credit Card Details:-***

Name as on card:-

Card Number:-

Expiry Date:-

***Please send the registered version to:-***

Name:

Address:

Post/Zip Code:

Day Time Tel. No.

***You can also contact us by:-***

Phone:+44 (0)1889 565064; FAX: +44 (0)1889 563219; Compuserve: 74774,1347

Internet: 74774.1347@compuserve.com ,

or via Section 4 of the UKSHARE forum on Compuserve or at <http://www.smartcode.com>

It would also help us if you could tell us where you got SmartSum from:-

And any suggestions you have for enhancements:-

# Order Form - SmartSum R1.6



Call 801 295-1890  
Fax 801 299-1781

You can print this order form by using the "Print Topic" option from the "File" menu.

We can accept your order by mail, E-mail, Fax or Phone. Unless otherwise requested we ship a 3.5" disk containing a licensed copy of the latest version of SmartSum R1.

**We also offer considerable discounts for multi-copy licences for use across networks, across sites or across corporations. Please contact us for details at 801 295 1890.**

## Send your order to:-

Insight Software Solutions  
P.O. Box 354,  
Bountiful, UT 84011-0354

Or Call 801 295-1890  
Or Fax 801 299-1781  
Or CompuServe: 71672,3464

## Please send me \_\_\_ licensed copy(s) of SmartSum R1.x

Price Per Copy:-

Price	\$29.00
Utah Residents add Sales Tax	\$ 1.78
Shipping by First Class Mail	\$ 3.00
--- or ---	
Priority or Int'l shipping	\$ 5.00
-----	-----
Total	\$
-----	-----

## All Prices are in US Dollars.

I enclose a check / wish to pay by MasterCard / Visa (delete as applicable)

## **Credit Card Details:-**

Name as on card:-

Card Number:-

Expiry Date:-

***Please send the registered version to:-***

Name:

Address:

Telephone Number.

**It would also help us if you could tell us where you got SmartSum from:-**

**And any suggestions you have for enhancements:-**



